

**TEMA ISENMANN**

Optima Wedgewire



Screening & Wear Solutions

# Optima Wedgewire

## Sb profiles

- single taper, minimal pegging CIP and 28cp profiles
- high release angles, minimal pegging in difficult applications

Stainless steel ensures long life through high abrasion and corrosion resistance. Screen panels custom made to suit the machine and application.

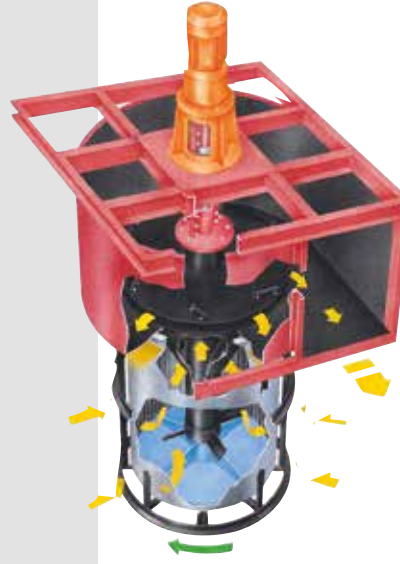
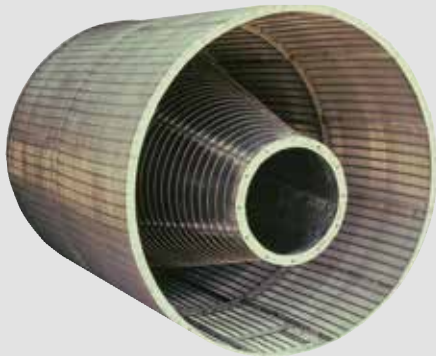
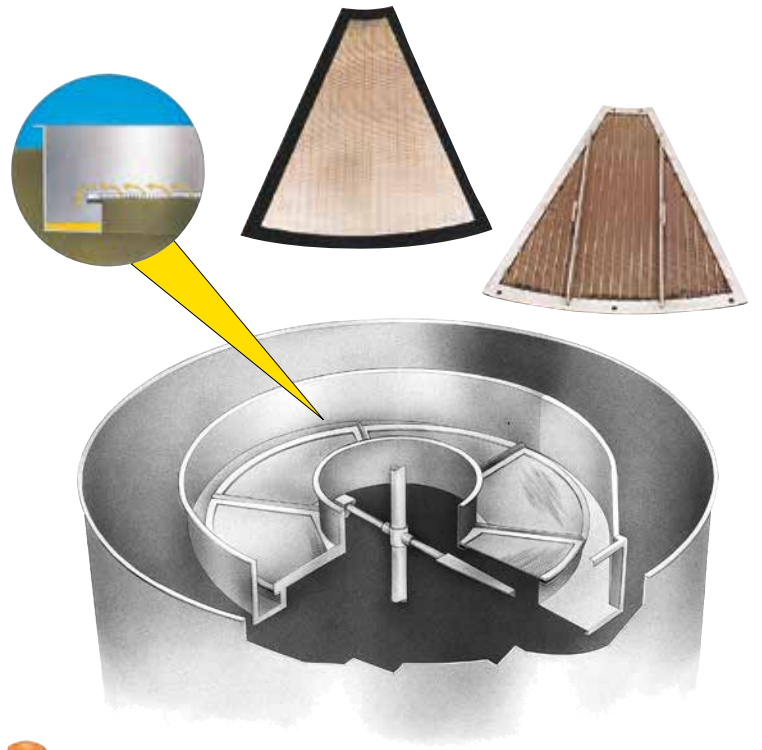
## Optima Flat Drainage Panels

Mainly used on vibrating screens and in static drainage chutes for de-sliming, dewatering and media recovery. Type and size of profile, slot widths and materials are chosen in accordance with the process requirements.

## Optima Carbon-in-Pulp/Carbon-in-Leach Screens

Wedgewire screen segments with sealing requirements are supplied for Kambalda interstage screens. These segments are custom made for each installation.

Wedgewire cones and cylinders are supplied for N.K.M. interstage screens. Seamless wedgewire cylinders are supplied for AAC MPS and AAC Pumpcell interstage screens. These parts are custom made to fit the units.



Longitudinal profiles	CIP 2.0		28cp 2.2		28sb 2.2		34sb 2.8		42sb 3.4		Longitudinal profiles		34sbb 2.2		42sbb 2.8		50sbb 3.4	
	3.0	3.8	4.5	5.0	6.5	5.0	3.5	6.5	4.0	7.5	5.0	8.3	10.2	12.5	15.4	18.5	22.3	
Wx(cm <sup>2</sup> )	0.0014		0.0027		0.0030		0.0043		0.0087		Wx(cm <sup>2</sup> )	0.0077		0.0077		0.0150		
S(mm)	=7.5		=8.4		=9		=9.5		=11		S(mm)	=11.5		=11.5		=12		
slot width w(mm)	a%	weight kg/m <sup>2</sup>	a%	weight kg/m <sup>2</sup>	a%	weight kg/m <sup>2</sup>	a%	weight kg/m <sup>2</sup>	a%	weight kg/m <sup>2</sup>	slot width w(mm)	a%	weight kg/m <sup>2</sup>	a%	weight kg/m <sup>2</sup>	a%	weight kg/m <sup>2</sup>	
0.2	9.1	18.6	8.3	19.9	8.3	25.8	6.7	29.1			0.2	8.3	34.5					
0.25	11.1	18.3	10.2	19.5	10.2	25.3	8.2	28.8			0.25	10.2	34.0					
0.315	13.6	18.0	12.5	19.0	12.5	24.6	10.1	28.1	8.5	34.5	0.315	12.5	33.5	10.1	38.7	10.5	47.7	
0.4	16.7	17.5	15.4	18.5	15.4	24.0	12.5	27.6	10.5	33.0	0.4	15.4	33.0	12.5	38.2	12.8	46.6	
0.5	20.0	17.0	18.5	17.9	18.5	23.2	15.2	26.9	12.8	32.3	0.5	22.3	31.5	18.4	35.9	15.6	45.2	
0.63	24.0	16.3	22.3	17.3	22.3	22.4	18.4	26.4	15.6	31.4	0.63	26.7	30.0	22.2	34.3	19.0	43.5	
0.8	28.6	15.7	26.7	16.4	26.7	21.3	22.2	25.0	19.0	30.3	0.8	31.2	29.0	26.3	32.8	22.7	41.6	
1.0	33.3	15.0	31.2	15.6	31.2	20.2	26.3	23.9	22.7	29.2	1.0	36.2	28.0	30.8	31.0	26.9	39.5	
1.25	38.5	14.2	36.2	14.7	36.2	19.1	30.9	22.7	26.9	27.8	1.25	38.9	27.0	33.3	30.0	29.1	38.5	
1.4	41.2	13.8	38.9	14.2	38.9	18.4	33.3	22.0	29.1	26.8	1.4	42.1	26.0	36.3	28.8	32.0	37.3	
1.6	44.4	13.3	42.1	13.7	42.1	17.7	36.4	21.2	32.0	26.1	1.6	45.0	25.5	39.1	27.7	34.6	35.8	
1.8	47.4	12.9	45.0	13.1	45.0	17.0	39.1	20.4	34.6	25.3	1.8	47.6	24.5	41.6	26.7	37.0	34.7	
2.0	50.0	12.5	47.6	12.6	47.6	16.3	41.7	19.8	37.0	24.4	2.0	50.4	23.5	44.5	25.6	39.7	33.5	
2.24	52.8	12.1	50.4	12.1	50.4	15.7	44.4	19.0	39.7	23.6	2.24	53.2	22.8	47.1	24.5	42.4	32.1	
2.5	55.6	11.6	53.2	11.6	53.2	15.0	47.2	18.2	42.4	22.7	2.5	56.0	21.8	50.0	23.4	45.0	31.0	
2.8	58.3	11.2	56.0	11.3	56.0	14.6	50.0	17.5	45.2	21.8	2.8	58.9	21.0	52.9	22.3	48.0	29.0	
3.15	61.2	10.8	58.9	10.6	58.9	13.7	52.9	16.6	48.0	21.0	3.15	61.7	19.5	55.9	21.1	51.0	28.0	
3.55	64.0	10.4	61.7	10.1	61.7	13.1	55.9	16.0	51.0	19.6	3.55	64.5	19.0	58.8	20.0	54.0	26.6	
4.0	66.7	10.0	64.5	9.6	64.5	12.4	58.8	15.1	54.0	19.0	4.0	67.2	18.0	61.6	18.9	57.0	25.0	
4.5			67.2	9.1	67.2	11.8	61.6	14.5	57.0	18.1	4.5	69.4	17.2	64.1	17.9	59.5	23.9	
5.0			69.4	8.7	69.4	11.2	64.1	13.8	59.5	17.2	5.0	71.8	16.5	66.6	17.0	62.2	22.7	
5.6							66.7	13.2	62.2	16.5	5.6	74.1	15.5	69.2	16.0	64.9	22.0	
6.3							69.2	12.4	64.9	15.3	6.3	76.3	14.0	71.7	15.0	68.2	20.0	
7.1							71.7	11.8	68.2	14.2	7.1	78.4	12.5	74.0	14.0	70.2	18.6	
8.0							74.0	11.0	70.2	12.3	8.0	82.0	11.5	78.1	12.4	74.6	16.5	
10.0							78.1	9.9	74.6	11.7	10.0							

## Sbb profiles – double taper, long life with precise sizing

### Optima Centrifuge Baskets

Optima Centrifuge Baskets are dynamically balanced to provide peak performance and good bearing life during operation.

Feed end flanges are machined to ensure precision fitting.

Baskets can have feed end and/or discharge end wear cones.

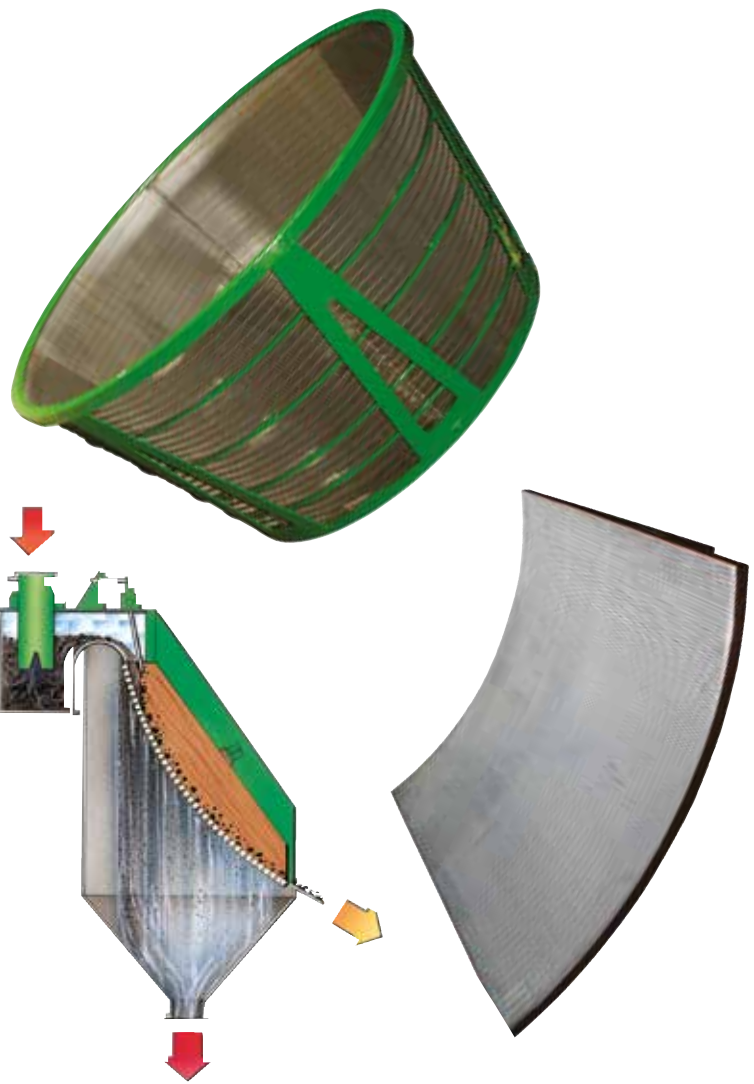
Accelerator bars to replace distribution cones are available.

### Basket Availability

We manufacture baskets to suit all sizes of centrifuges commonly used.

HES	HSG	H900
1 150 x 10°	1 000 x 18°	H 1 000
1 300 x 10°	1 100 x 13°	FC 1 200 x 20°
1 300 x 15°	1 100 x 18°	VM 1 300 x 13°
1 450 x 13°	1 200 x 13°	VM 1 400 x 15°
	1 200 x 18°	CX 1 200
	1 300 x 13°	
	1 300 x 15°	
	1 300 x 18°	
	1 400 S x 13°	
	1 500 x 13°	
	1 500 x 15°	

Other sizes or radial slots are available on request.



### Optima Sievebends

Comparative tests conducted by major South African users have proven conclusively that Optima Sievebends are the most cost-effective. The welded wedgewire construction ensures maximum open area and efficiency and the high chrome content gives long life through high abrasion resistance. Complete sievebend installations are designed, manufactured, installed and commissioned.

### Multodeck Polywedge Panels

Polywedge panels offer the convenience and lower running costs of the proven Multodeck modular systems together with the excellent open area of wedgewire. The pin and sleeve fastening system guarantees secure and positive location of the panels onto the support frame and locks panels together.

### Material of Construction

Multotec uses 430 stainless steel in abrasive applications. This is a ferritic steel with no nickel that has a high abrasion resistance and good weldability.

Multotec uses 304 stainless steel for corrosive applications.

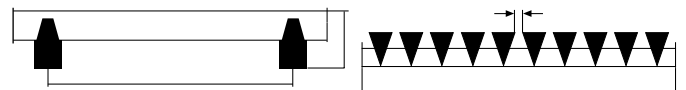
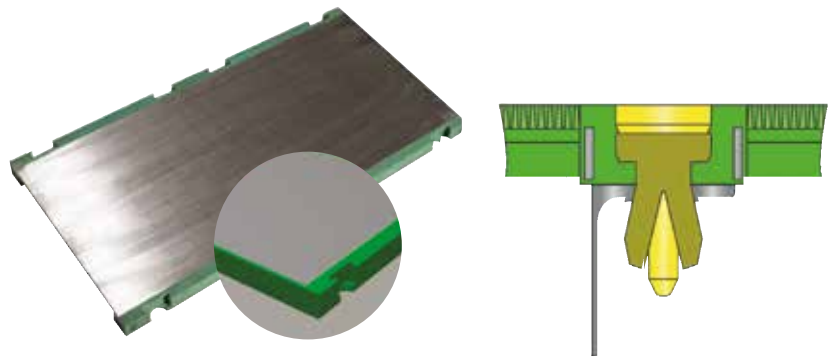
316 stainless steel is available on request for highly corrosive applications.

### Profiles

The profile of the longitudinal wires determines the shape and size of the downward opening slot and affects the extent to which slots remain open.

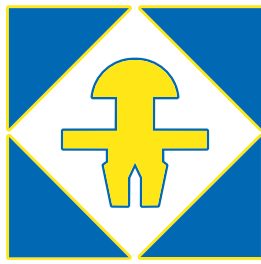
### Drainage Rates

Ask our sales engineers to advise you.



- 1 = Longitudinal profile (forming the slots) with resistance moment  $W_x$ .
- 2 = Crossbars, Q55
- tQst = Crossbar pitch normally 50 mm but also at closer spacings on request.
- s = Depth of wedgewire mate
- w = Slot width
- a = Open area. (see table)





**TEMA ISENMANN**

**Screening Solutions**  
**Call (859) 252-0613**  
**Email: [sales@temaisenmann.com](mailto:sales@temaisenmann.com)**



**Visit [www.temaisenmann.com](http://www.temaisenmann.com) to learn more!**